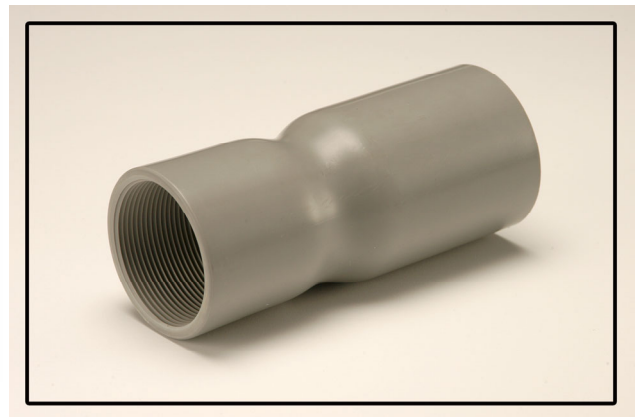
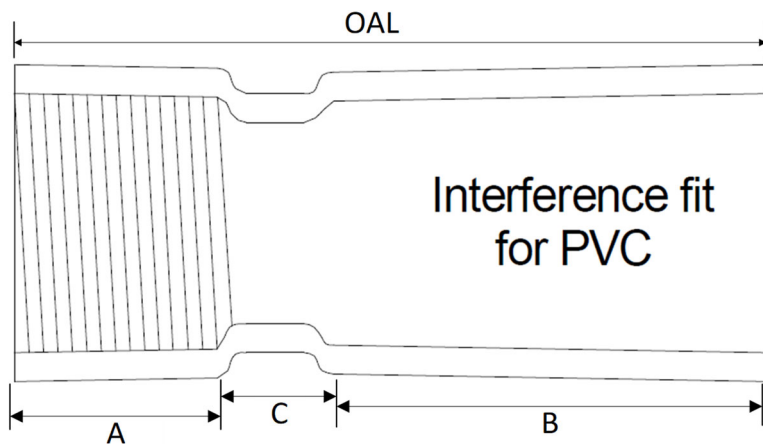




Tacoma Facility
 1427 E 26th Street
 Tacoma, WA 98421
 (253) 272-7788

Quincy Facility
 1302 NE Intermodal Way
 Quincy, WA 98848
 (509) 497-0350

EXTENDED FA ***(FEMALE ADAPTER)***



Pipe Size (inches)	Overall Length OAL (avg)	Threaded Side A (inch)	PVC Bell Side B (inch)	Gap C (inch)	Weight (lbs)
2	6.5	2	3	1.5	0.620
3	7.0	2	3.5	1.5	1.345
4	7.5	2	4	1.5	2.052
5	9.25	2.5	5.5	1.25	3.310
6	9.75	2.75	5.5	1.5	5.005

Advantages & Highlights of Extended FAs:

- Manufactured from Schedule 80 pipe conforming to UL 651 and NEMA TC-2 *Electrical Polyvinyl Chloride (PVC) Conduit*
- Compression formed interference fit conforms to UL651 and NEMA TC-3 *Polyvinyl Chloride (PVC) Fittings for Use with Rigid PVC Conduit and Tubing*
- Couplings are intended to be joined with a cement that is or contains a solvent for polyvinyl chloride
- Threads are made to NPT (National Pipe Tapered)
 - 2" = 11.5 threads per inch
 - 3", 4", 5", 6" = 8 threads per inch
 - Taper is 3/4" per foot (approx. 3.5°)
- Dimensions are approximate and subject to normal manufacturing tolerances

All dimensions are inches